



PhD Workshop  
China ■■■■■

*Your Offer Makes More Senses Here...*

## PhD Workshop China 2019

Nov. 23 (Saturday, 09:00-17:00)

Nov. 24 (Sunday, 09:00-12:00)

Shangri-La Hotel Beijing

and

Nov. 26 (Tuesday, 10:00-17:00)

Okura Garden Hotel Shanghai

[www.phdchina.org](http://www.phdchina.org)

# Post-event Statistics Report

December 17, 2019

Part A, Statistics for Beijing Event / Page 2

Part B, Statistics for Shanghai Event / Page 11

Part C, Showed-up Students' Questionnaires / Page 19

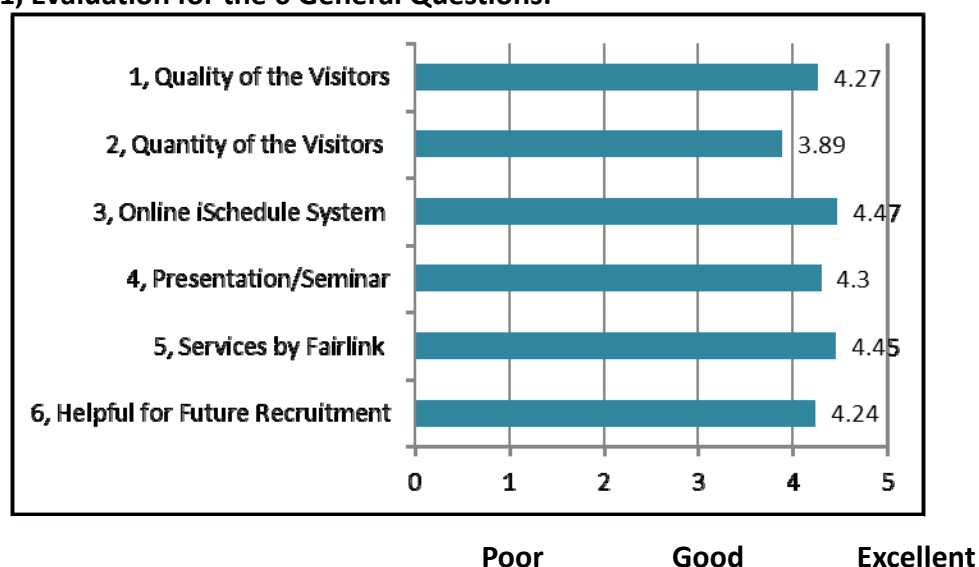
## Part A, Statistics for Beijing event:

### I. Delegates' Evaluation in Beijing

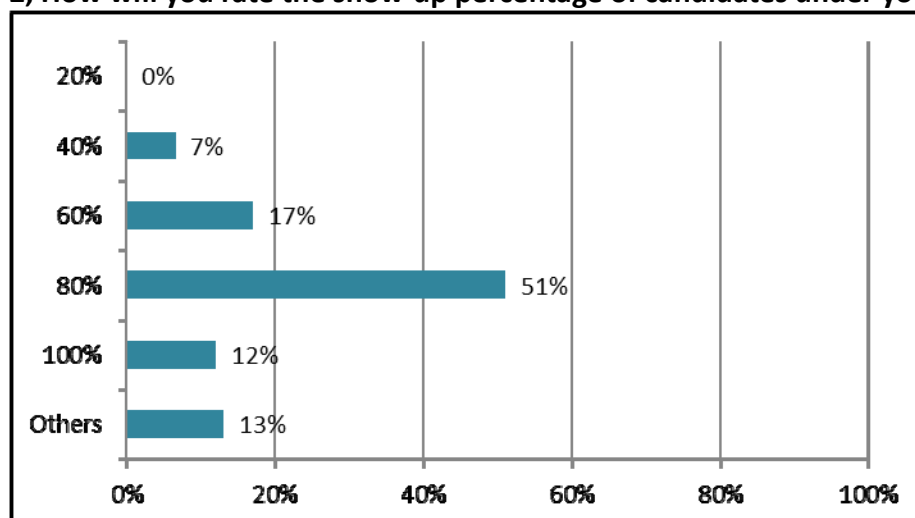
To improve the workshop quality in the future, we continue running the Delegates Evaluation Survey among the 152 delegates from 62 registered institutions and universities of 14 countries and regions on the second day of PhD Workshop China 2019 in Beijing.

Some 94 copies of filled-out Evaluation Survey were recorded. The findings are found as follows:

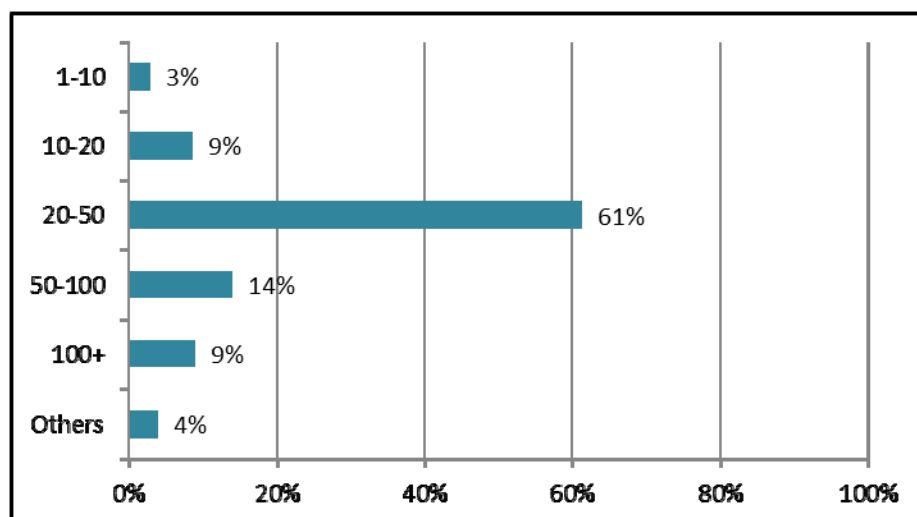
#### 1, Evaluation for the 6 General Questions:



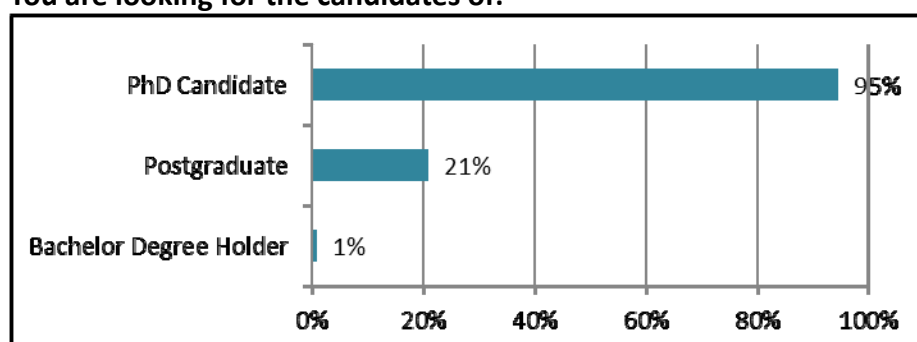
#### 2, How will you rate the show-up percentage of candidates under your scheduled agenda?



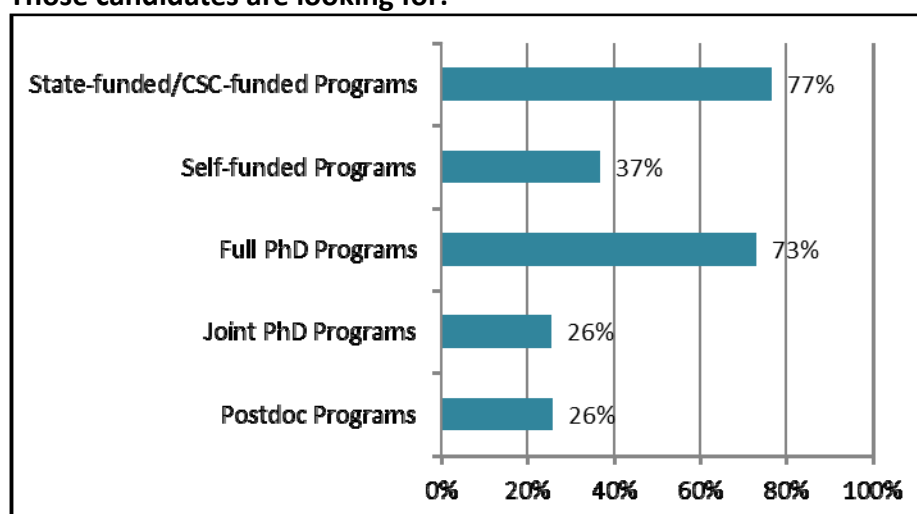
### 3, How many PhD candidates in total have you interviewed/talked with at the workshop?



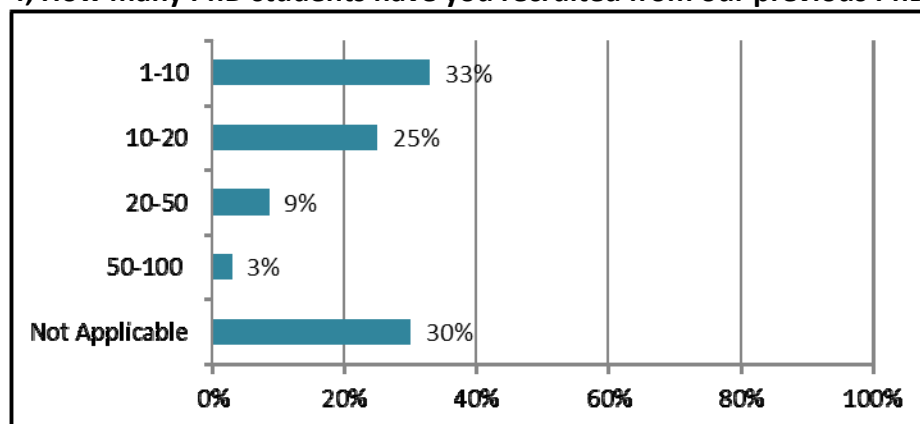
### You are looking for the candidates of:



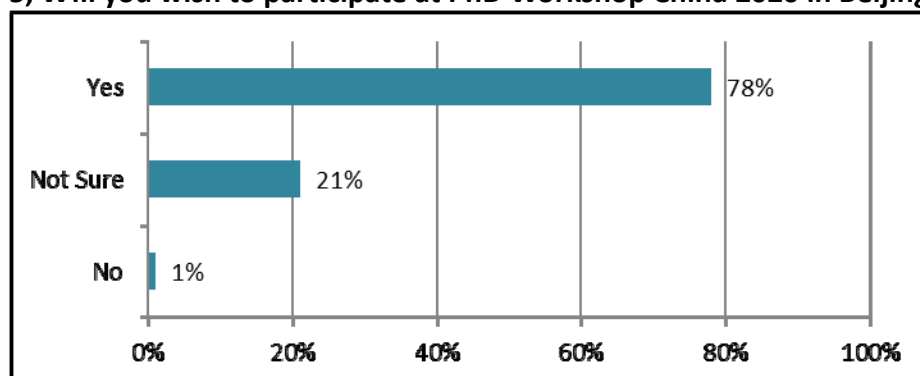
### Those candidates are looking for:



#### 4, How many PhD students have you recruited from our previous PhD workshops?



#### 5, Will you wish to participate at PhD Workshop China 2020 in Beijing on Nov. 21-22?



## II. Showed-up Students' Breakdown Data in Beijing

The total pre-registered students for the workshop both in Beijing and Shanghai are 3404, which we have saved in the USB key and gave it to you on site for further follow-up after the workshops.

In Beijing, there were 2,607 pre-registered students, among which 1,470 students showed up at the workshop on the weekend. The numbers are as follows:

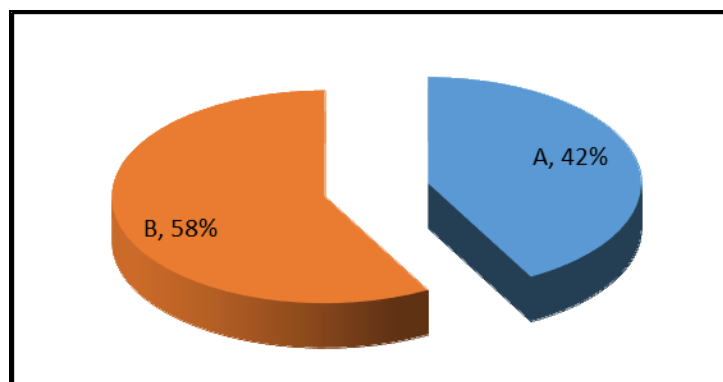
Status and Statistics	Day 1	Day 2
Showed-up Students	1,289	181*
In Total	1,470	

\*This does not include those re-entry students on Sunday morning.

Our major findings are shown as follows. The source data is based upon the showed-up students at the workshop in Beijing:

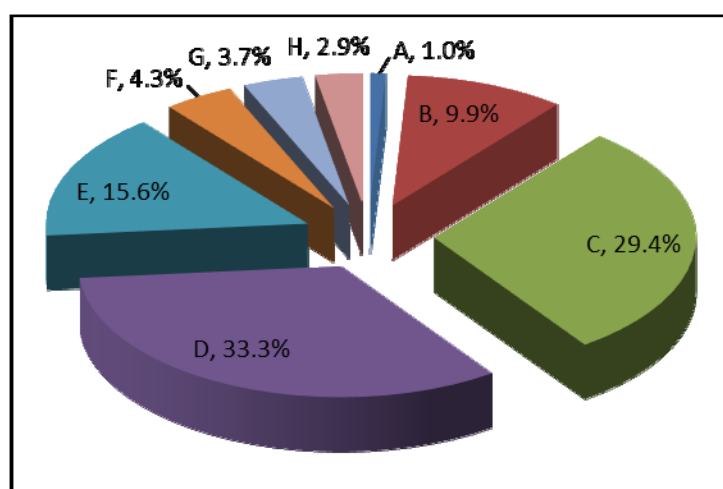
## 1, Students' genders:

A	Male	618	42%
B	Female	852	58%



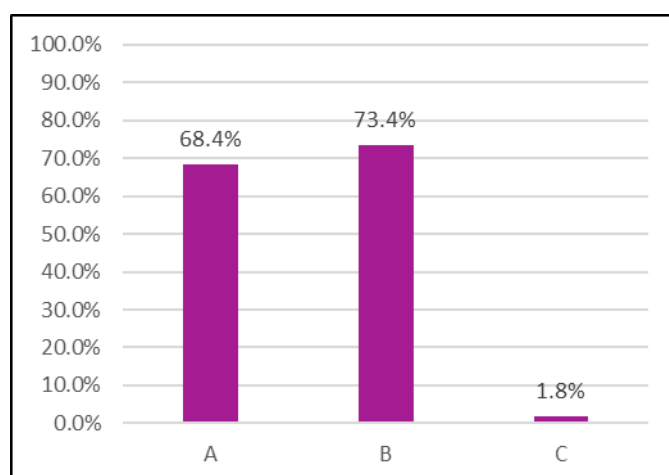
## 2, Students' current qualifications:

A	PhD Degree Holder	14	1.0%
B	PhD Candidate	146	9.9%
C	Master Degree Holder	432	29.4%
D	Year 3 of Postgraduate	490	33.3%
E	Year 2 of Postgraduate	229	15.6%
F	Year 1 of Postgraduate	63	4.3%
G	Bachelor Degree Holders	54	3.7%
H	Senior/Undergraduate	42	2.9%



### 3, Purpose of students participation in this Workshop:

A	General inquires	1006	68.4%
B	Meet with professors, advisors for discipline-focused meetings and interviews	1079	73.4%
C	Others	26	1.8%

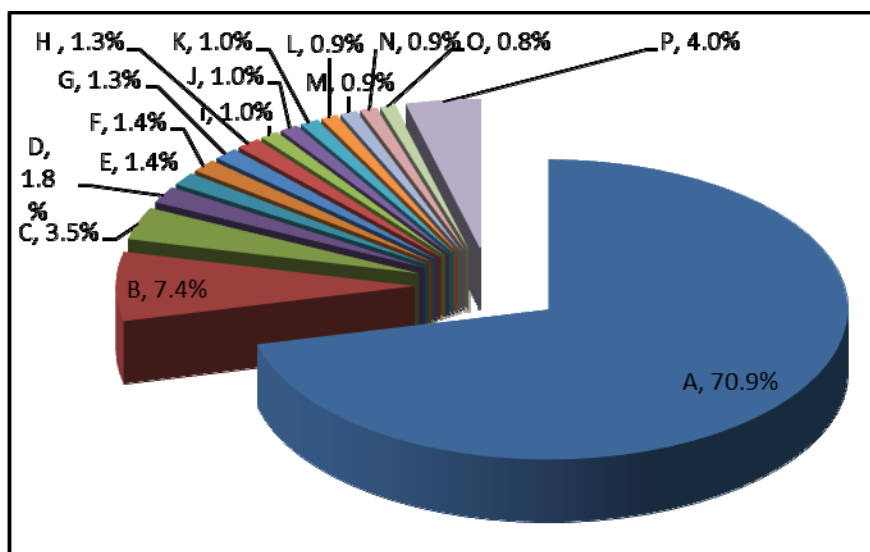


### 4, Students' origins – Top 15 (by provinces):

A	Beijing	1042	70.9%
B	Tianjin	108	7.4%
C	Shandong	52	3.5%
D	Henan	27	1.8%
E	Hebei	21	1.4%
F	Guangdong	20	1.4%
G	Jilin	19	1.3%
H	Shaanxi	19	1.3%
I	Liaoning	15	1.0%
J	Inner Mongolia	14	1.0%
K	Sichuan	14	1.0%
L	Heilongjiang	13	0.9%
M	Jiangsu	13	0.9%
N	Shanghai	13	0.9%
O	Hubei	12	0.8%
P	Others*	68	4.0%

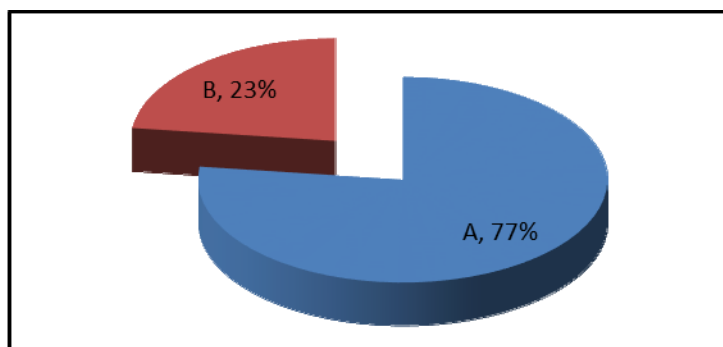
#### Others\* include:

Shanxi, Anhui, Zhejiang, Chongqing, Fujian, Xinjiang, Hunan, Jiangxi, Guizhou, Ningxia, Gansu, Guangxi, Qinghai and Yunnan.

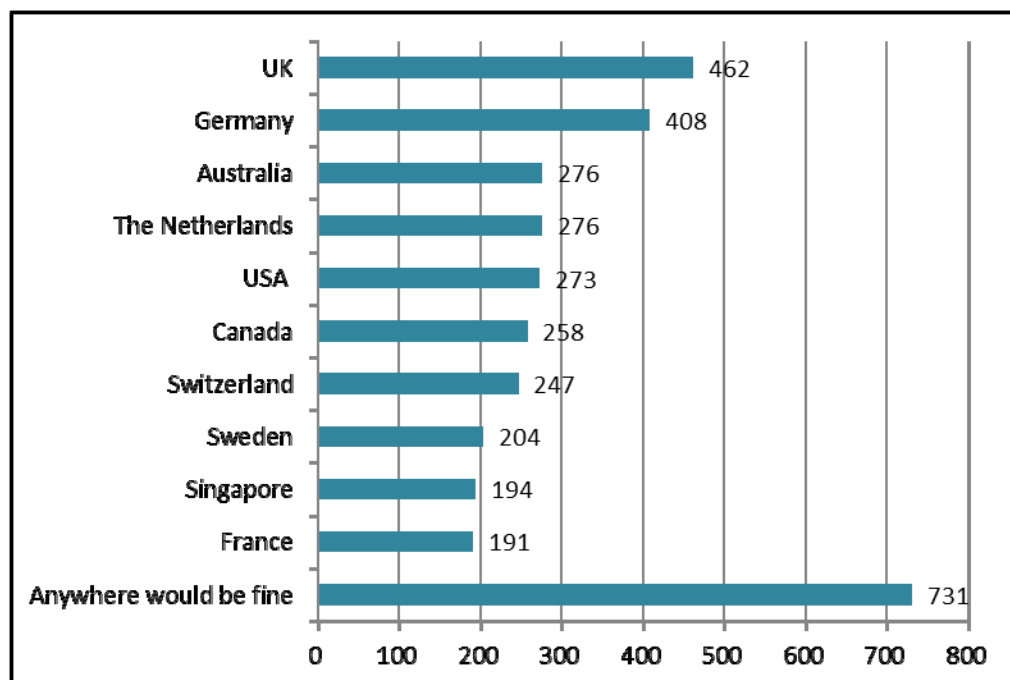


#### 5, Time schedule to start PhD study/research overseas:

A	Year of 2020	1127	77%
B	Year of 2021	343	23%

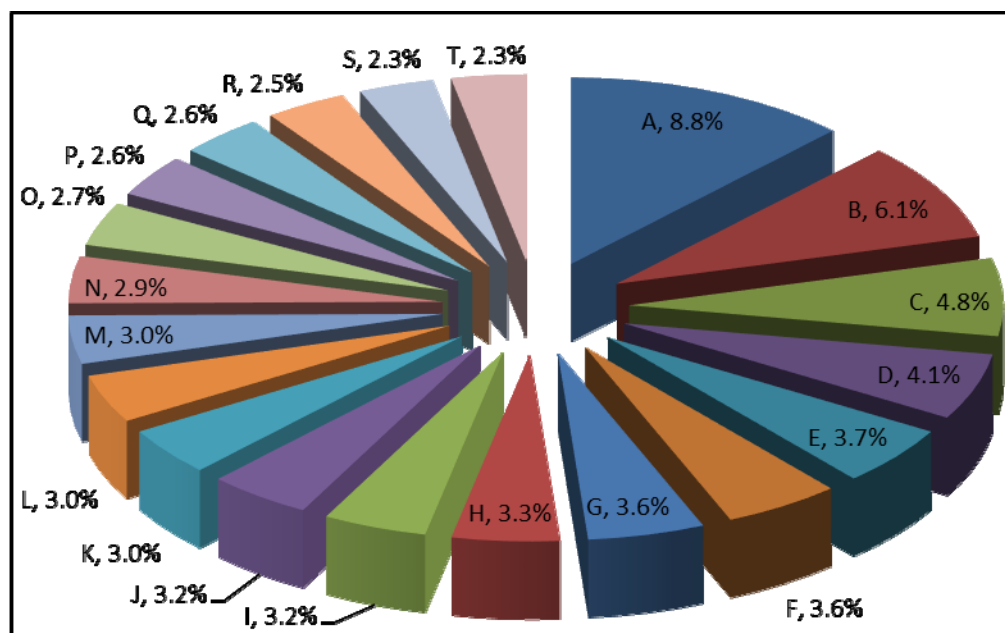


#### 6, Top 10 desired destinations (by countries and regions ):



## 7, Top 20 target disciplines for PhD study overseas:

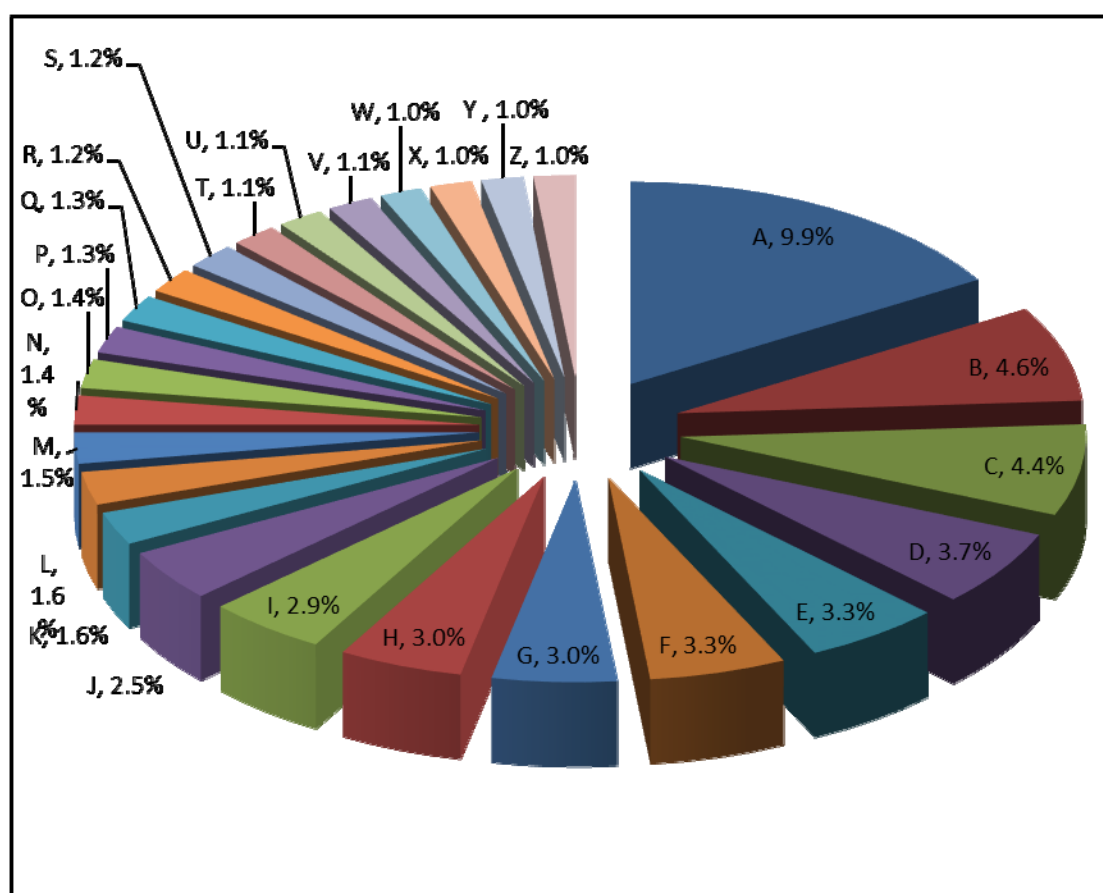
A	Computer Science and Technology	130	8.8%
B	Accountancy/Banking/Economics/Finance	89	6.1%
C	Life Sciences	70	4.8%
D	Materials Science	60	4.1%
E	Education	55	3.7%
F	Clinical Medicine	53	3.6%
G	Chemistry & Chemical Engineering	52	3.6%
H	Environmental Science and Technology	49	3.3%
I	Humanities/Liberal Arts	47	3.2%
J	Mechanical Engineering	47	3.2%
K	Business Administration & Commercial Studies	44	3.0%
L	Electronics and Automatic Control	44	3.0%
M	Psychology	44	3.0%
N	Geosciences/Earth Science	42	2.9%
O	Law and Legal Studies	40	2.7%
P	Linguistics & Languages / Interpretation and Translation	38	2.6%
Q	Pharmacology / Pharmaceutical	38	2.6%
R	Biology/Biotechnology	36	2.5%
S	Agriculture	34	2.3%
T	Preventive Medicine and Hygiene	34	2.3%



## 8, Top 26 universities that students are from:

A	University of Chinese Academy of Sciences	145	9.9%
B	Beijing University of Aeronautics and Astronautics	68	4.6%
C	Peking University	65	4.4%
D	Beijing Normal University	55	3.7%
E	Beijing Institute of Technology	49	3.3%
F	China Agricultural University	48	3.3%
G	Renmin University of China	44	3.0%
H	Tianjin University	44	3.0%
I	Chinese Academy of Agricultural Sciences	43	2.9%
J	Chinese Academy of Medical Sciences-Peking Union Medical College	37	2.5%
K	Tianjin Medical University	24	1.6%
L	University of International Business & Economics	23	1.6%
M	Shandong University	22	1.5%
N	Tsinghua University	20	1.4%
O	Zhengzhou University	20	1.4%
P	Central University of Finance & Economics	19	1.3%
Q	China University of Petroleum	19	1.3%
R	Minzu University of China	17	1.2%
S	Jilin University	17	1.2%
T	Beijing Jiaotong University	16	1.1%
U	Nankai University	16	1.1%

V	Capital Normal University	16	1.1%
W	Beijing Foreign Studies University	15	1.0%
X	Beijing University of Chemical Technology	15	1.0%
Y	Beijing University of Posts and Telecommunications	15	1.0%
Z	China University of Political Science and Law	15	1.0%



### III. PhD Programs Presentations/Seminars in Beijing

In Beijing, 26 seminars were presented by 24 institutions and universities on site. Some 1,700+ students attended the presentations throughout the workshop in one and a half days.

## Part B, Statistics for Shanghai event:

### I. Delegates' Evaluation in Shanghai

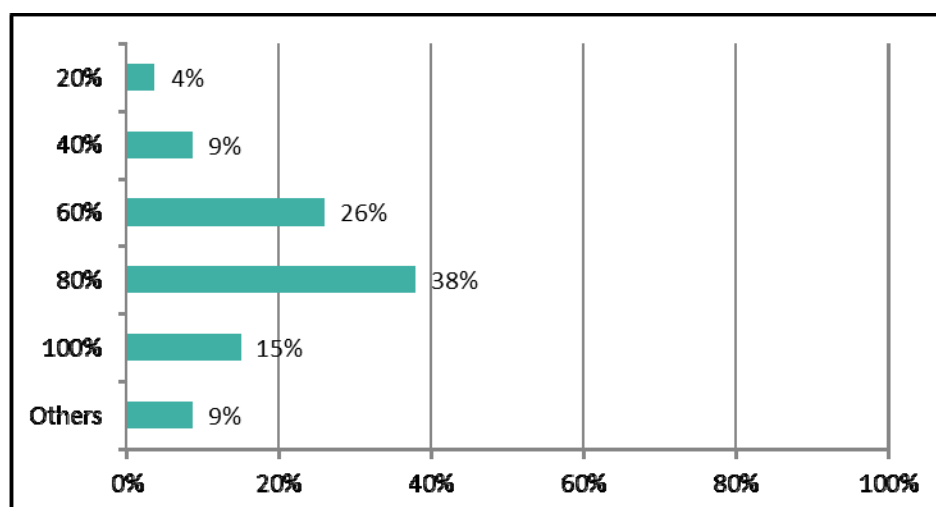
In Shanghai, we also made the Delegates Evaluation Survey among the 141 delegates from 60 registered institutions and universities of 12 countries and regions.

Some 81 copies of filled-out Evaluation Survey were recorded. The findings are found as follows:

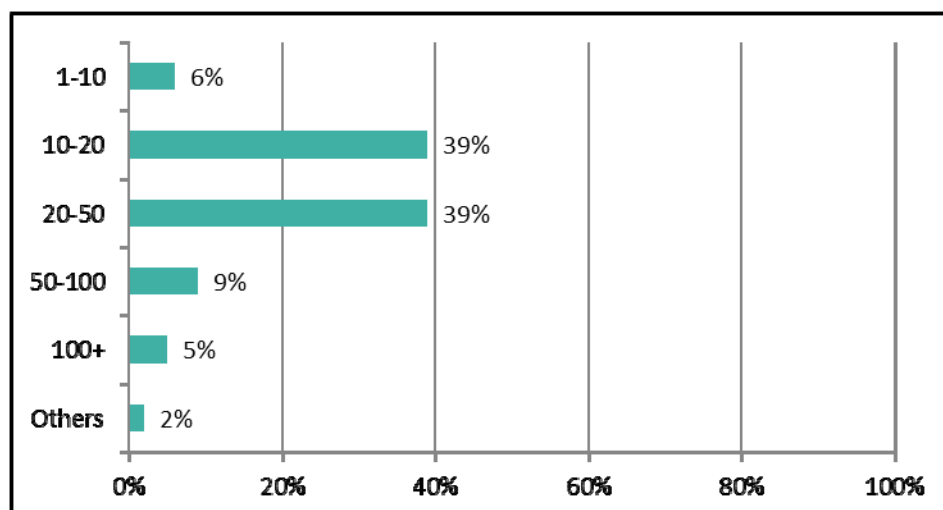
#### 1, Evaluation for the 6 General Questions:



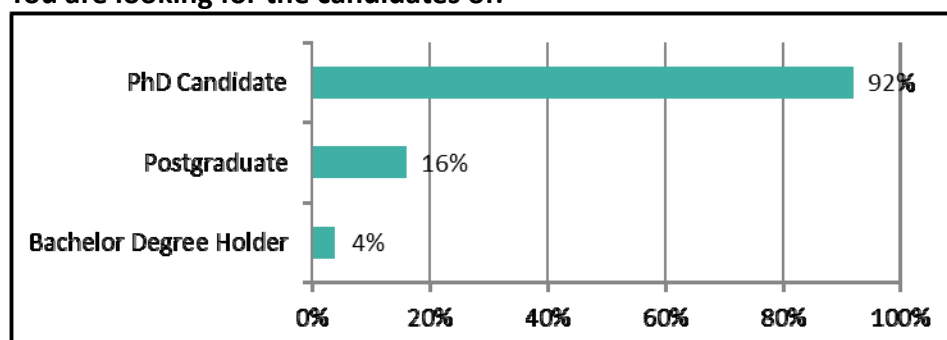
#### 2, How will you rate the show-up percentage of candidates under your scheduled agenda?



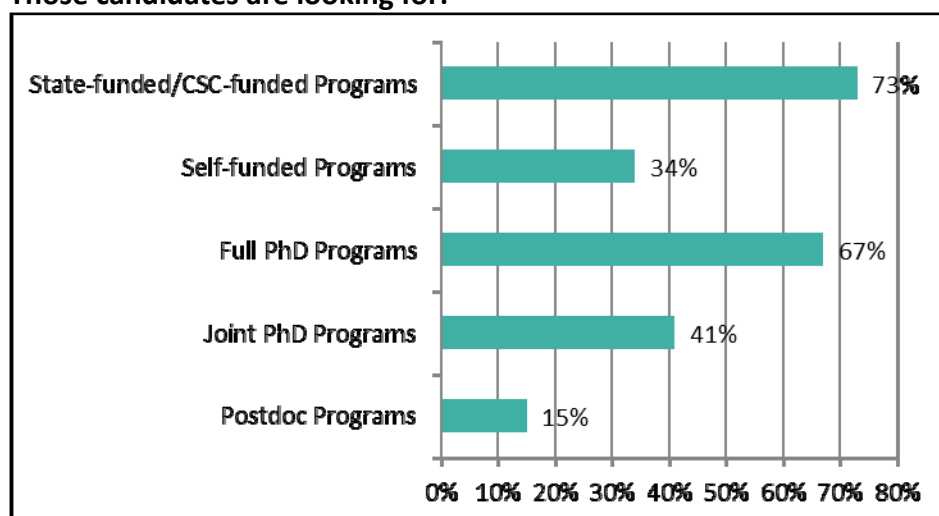
### 3, How many PhD candidates in total have you interviewed/talked with at the workshop?



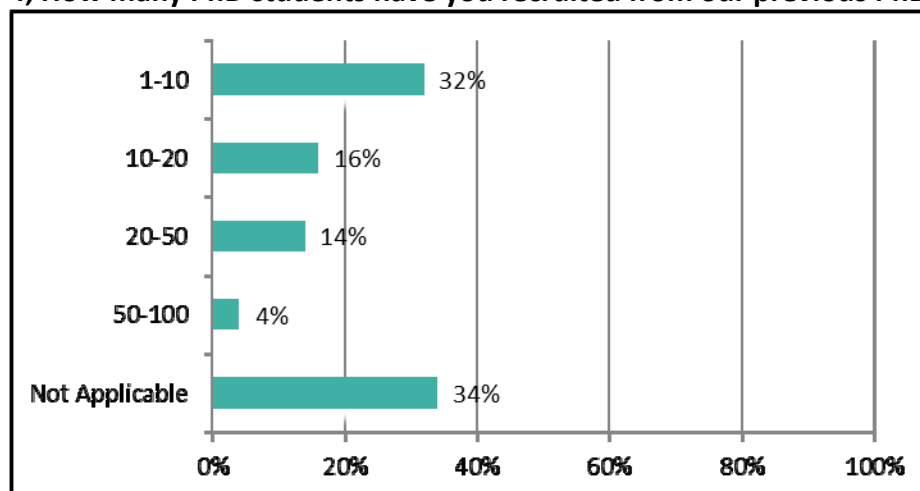
### You are looking for the candidates of:



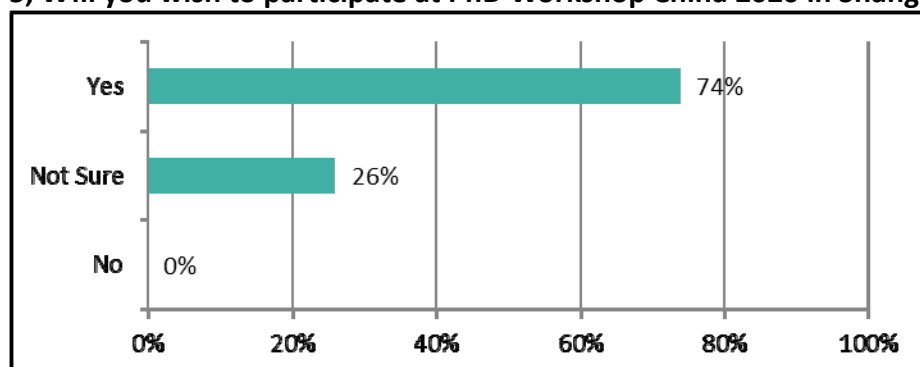
### Those candidates are looking for:



#### 4, How many PhD students have you recruited from our previous PhD workshops?



#### 5, Will you wish to participate at PhD Workshop China 2020 in Shanghai on Nov. 24?



## II. Showed-up Students' Breakdown Data in Shanghai

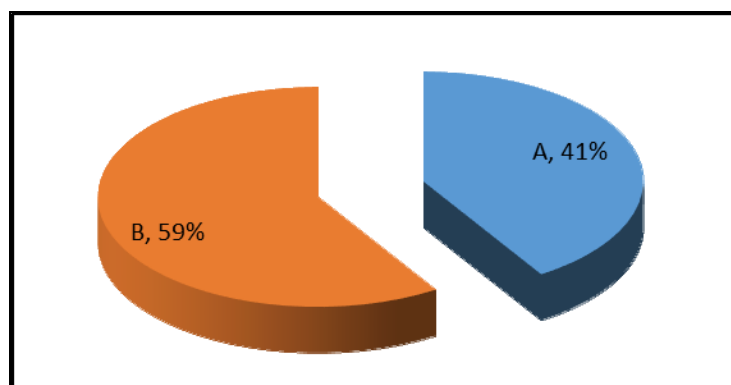
In Shanghai, 1,325 students pre-registered for the workshop, among which 683 students finally showed up at the workshop. The numbers are as follows:

Status and Statistics	10:00-17:00
Showed-up Students	683

Our major findings are shown as follows. The source data is based upon the showed-up students at the workshop in Shanghai:

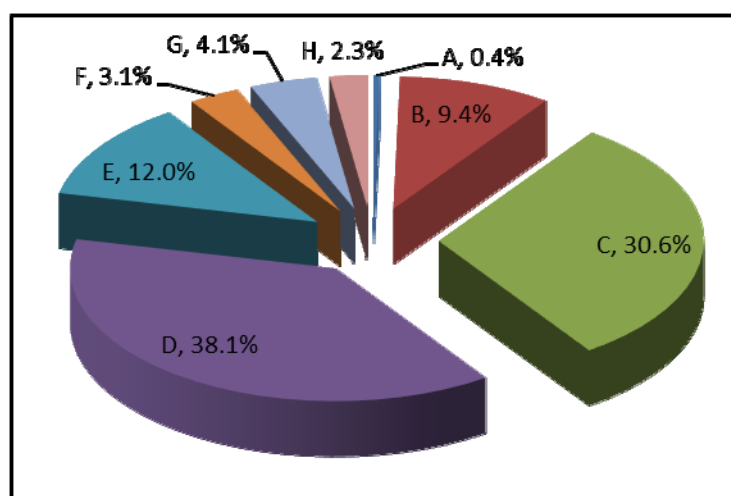
## 1, Students' genders:

A	Male	282	41%
B	Female	401	59%



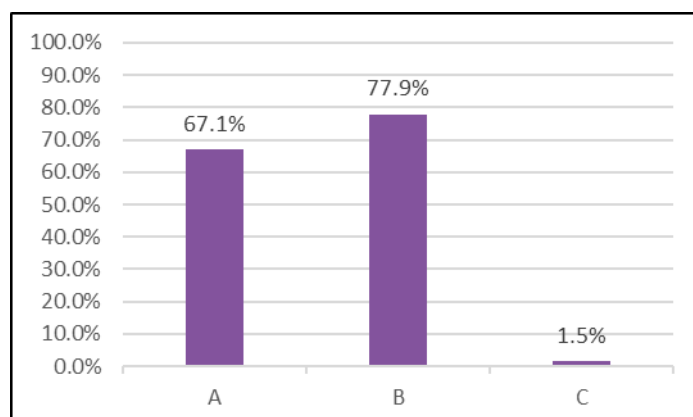
## 2, Students' current qualifications:

A	PhD Degree Holder	3	0.4%
B	PhD Candidate	64	9.4%
C	Master Degree Holder	209	30.6%
D	Year 3 of Postgraduate	260	38.1%
E	Year 2 of Postgraduate	82	12.0%
F	Year 1 of Postgraduate	21	3.1%
G	Bachelor Degree Holders	28	4.1%
H	Senior/Undergraduate	16	2.3%



### 3, Purpose of students participation in this Workshop:

A	General inquires	458	67.1%
B	Meet with professors, advisors for discipline-focused meetings and interviews	532	77.9%
C	Others	10	1.5%

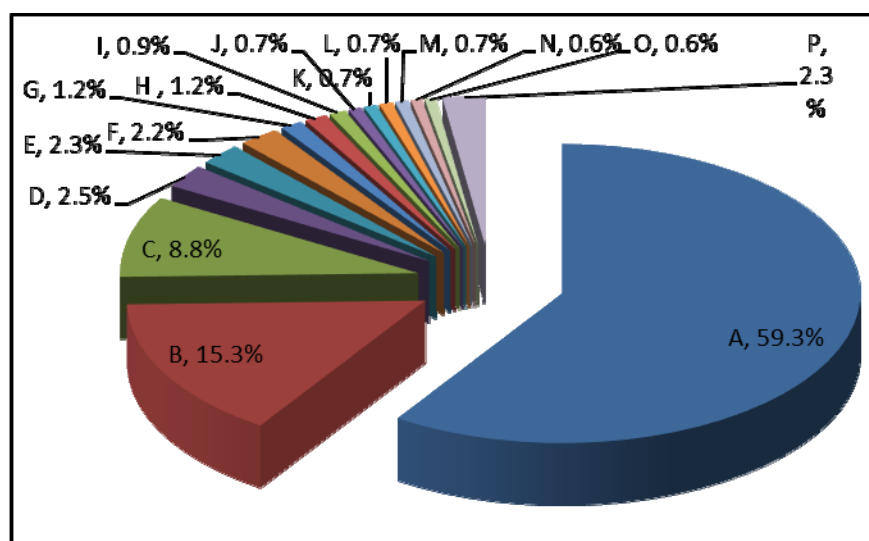


### 4, Students' origins – Top 15 (by provinces):

A	Shanghai	405	59.3%
B	Jiangsu	104	15.3%
C	Zhejiang	60	8.8%
D	Anhui	17	2.5%
E	Fujian	16	2.3%
F	Guangdong	15	2.2%
G	Hubei	8	1.2%
H	Hunan	8	1.2%
I	Sichuan	6	0.9%
J	Jiangxi	5	0.7%
K	Liaoning	5	0.7%
L	Shannxi	5	0.7%
M	Shandong	5	0.7%
N	Henan	4	0.6%
O	Xinjiang	4	0.6%
P	Others*	16	2.3%

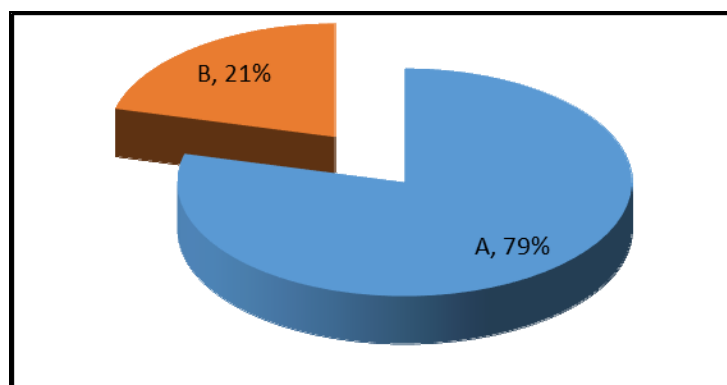
#### Others\* include:

Beijing, Gansu, Hebei, Jilin, Chongqing, Guangxi, Hainan, Heilongjiang, Ningxia, Tianjin and Yunnan

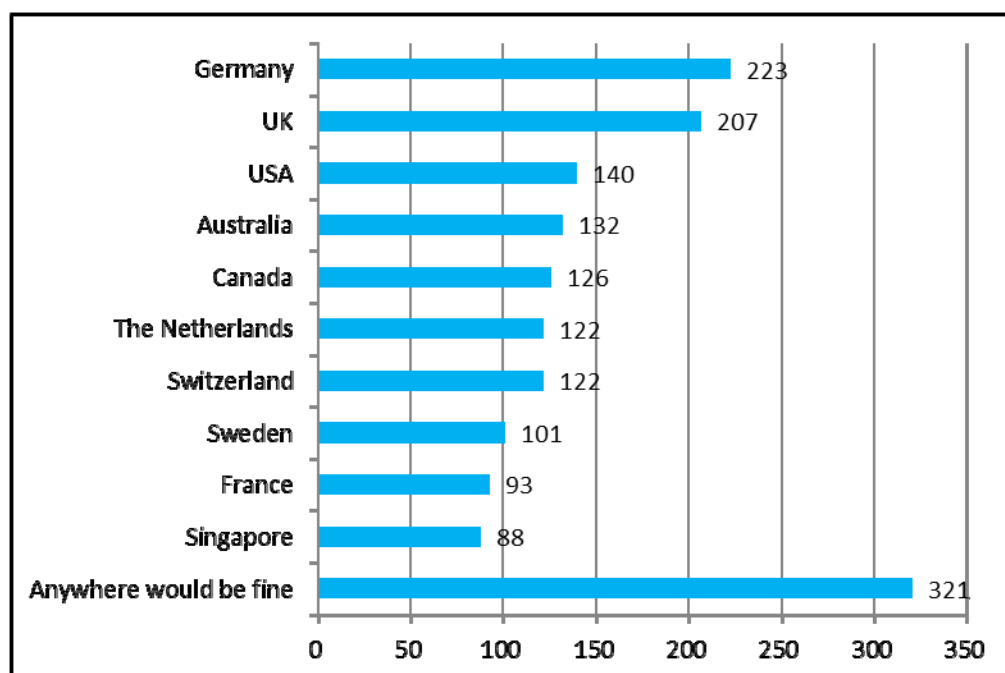


#### 5, Time schedule to start PhD study/research overseas:

A	Year of 2020	539	79%
B	Year of 2021	144	21%

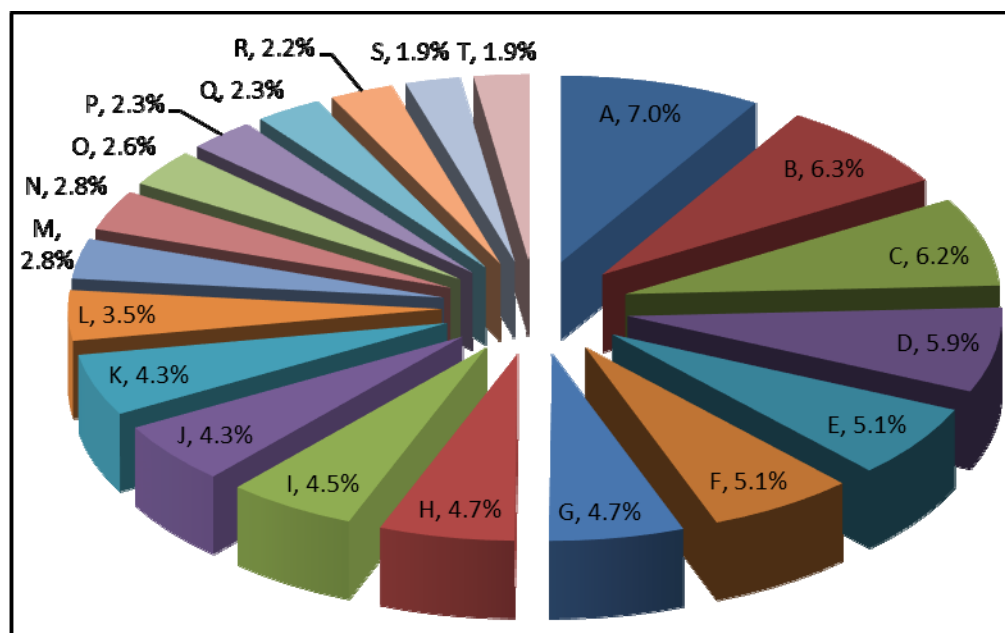


#### 6, Top 10 desired destinations (by countries and regions ):



## 7, Top 20 target disciplines for PhD study overseas:

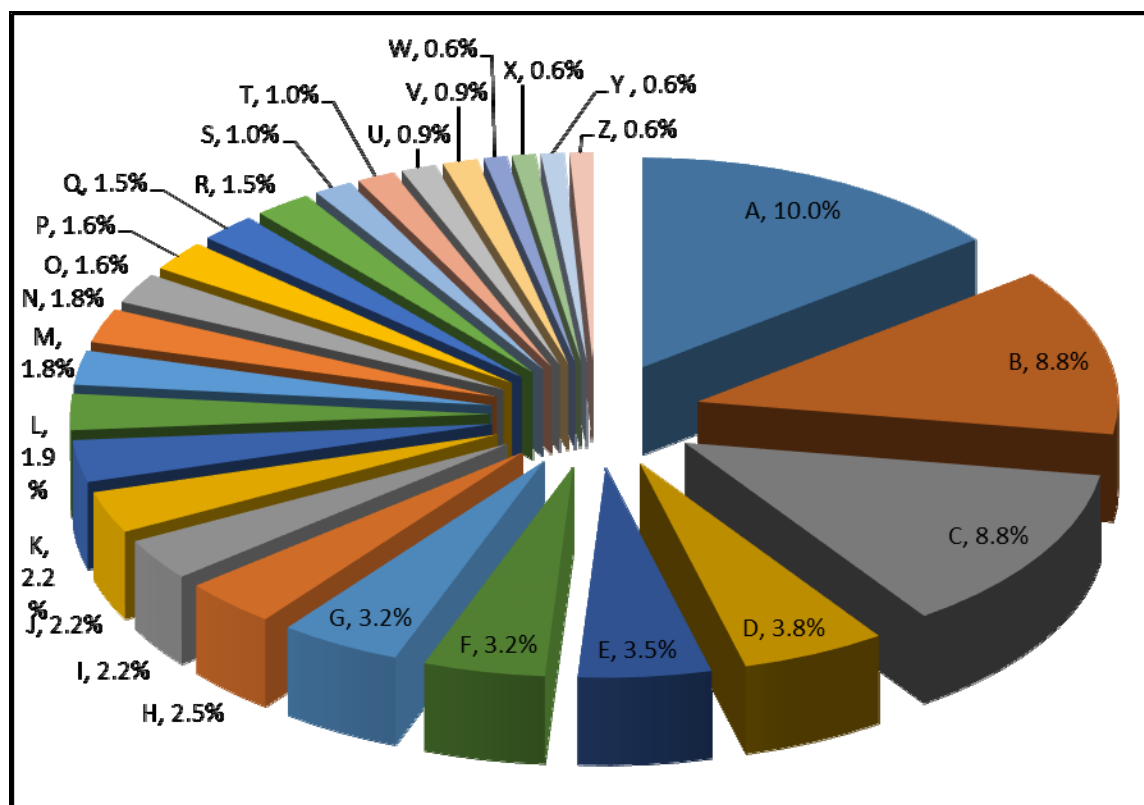
A	Computer Science and Technology	48	7.0%
B	Life Sciences	43	6.3%
C	Clinical Medicine	42	6.2%
D	Materials Science	40	5.9%
E	Chemistry & Chemical Engineering	35	5.1%
F	Preclinical Medicine	35	5.1%
G	Accountancy/Banking/Economics/Finance	32	4.7%
H	Biology/Biotechnology	32	4.7%
I	Mechanical Engineering	31	4.5%
J	Business Administration & Commercial Studies	29	4.3%
K	Environmental Science and Technology	29	4.3%
L	Psychology	24	3.5%
M	Education	19	2.8%
N	Electronics and Automatic Control	19	2.8%
O	Physics	18	2.6%
P	Humanities/Liberal Arts	16	2.3%
Q	Pharmacology / Pharmaceutical	16	2.3%
R	Law and Legal Studies	15	2.2%
S	Civil Engineering and Building Construction	13	1.9%
T	International Relations/Political Science	13	1.9%



## 8, Top 26 universities that students are from:

A	Tongji University	68	10.0%
B	Fudan University	60	8.8%
C	Shanghai Jiao Tong University	60	8.8%
D	Shanghai University	26	3.8%
E	East China Normal University	24	3.5%
F	East China University of Science and Technology	22	3.2%
G	Zhejiang University	22	3.2%
H	Soochow University	17	2.5%
I	Nanjing University	15	2.2%
J	University of Chinese Academy of Sciences	15	2.2%
K	University of Shanghai for Science and Technology	15	2.2%
L	Southeast University	13	1.9%
M	University of Science and Technology of China	12	1.8%
N	Xiamen University	12	1.8%
O	Shanghai International Studies University	11	1.6%
P	ShanghaiTech University	11	1.6%
Q	Jiangnan University	10	1.5%
R	Wenzhou University	10	1.5%
S	China Pharmaceutical University	7	1.0%
T	Shanghai Ocean University	7	1.0%
U	Hangzhou Normal University	6	0.9%

V	Nanjing University of Science and Technology	6	0.9%
W	Central South University	5	0.6%
X	Donghua University	5	0.6%
Y	Shanghai University of Finance & Economics	5	0.6%
Z	King's College London	5	0.6%



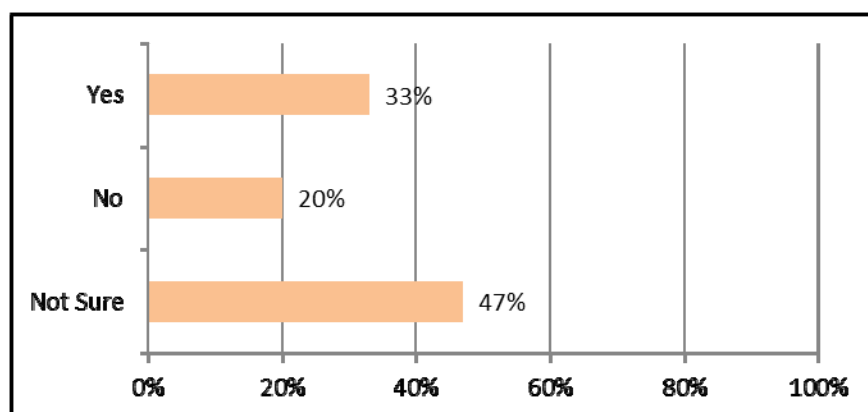
### III. PhD Programs Presentations/seminars in Shanghai:

In Shanghai, due to limited time slots and space, 9 presentations were held by 8 institutions and universities on site. Some 700+ students attended the presentations at the workshop in the full day program.

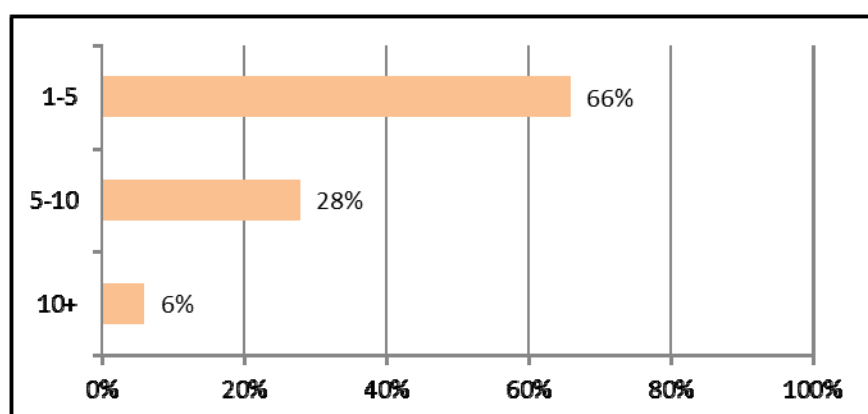
## Part C, Showed-up Students' Questionnaires

After the workshop, we carried out a mass-mail questionnaires to the above showed-up students both in Beijing and Shanghai. As of Dec.17, 485 students responded to us, and their feedbacks are as follows for your further reference:

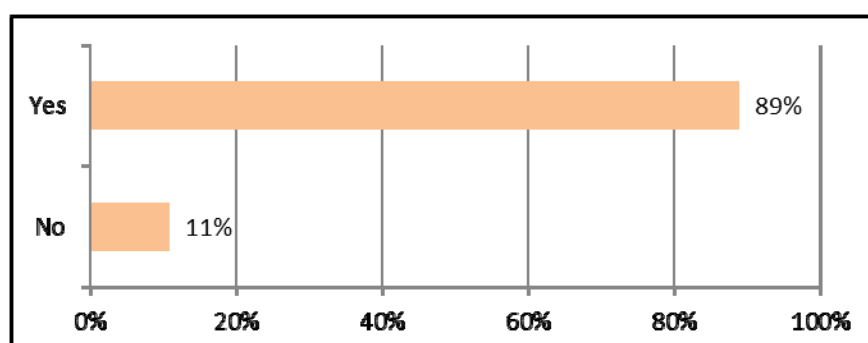
1, Is there a possibility that you would be admitted by these overseas universities through attending this Workshop?



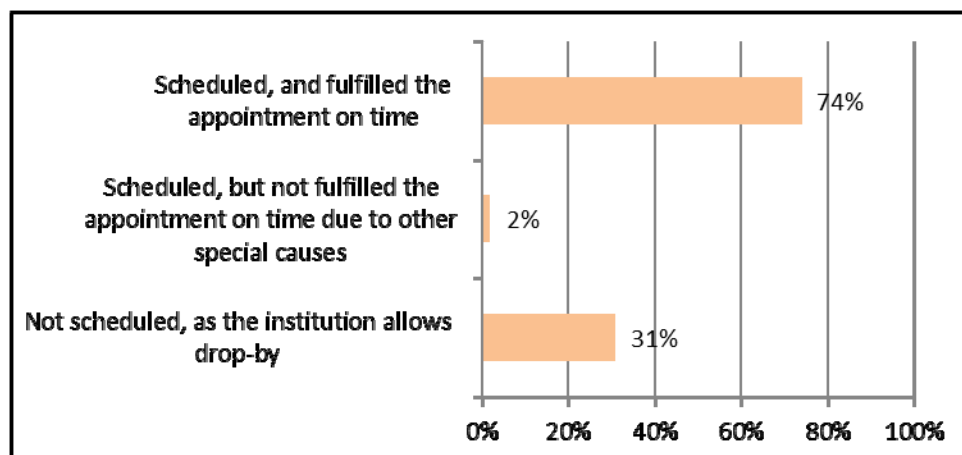
2, How many university delegates/professors have you met and talked with at the workshop?



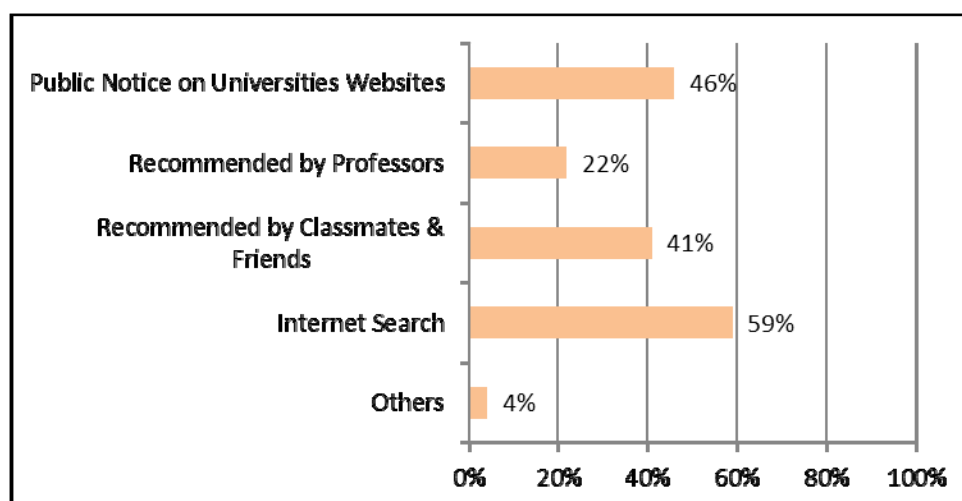
3, Before the workshop, have you prepared yourself for the interview by visiting the university website, getting information on their PhD programs, admission criteria etc.?



4, Have you iScheduled the on-site meeting or interview with professors beforehand, and fulfilled the appointment on time?



5, By what means do you usually get to know the overseas PhD programs (multi-optional)?





Thank you very much

for participation at PhD Workshop China 2019

Here kindly attached the **Photo Album** for your review

by Scanning the QR code below:



and

Look forward to welcoming you with us again at

**PhD Workshop China 2020**

**Nov. 21-22, 2020 | Beijing**

**Nov. 24, 2020 | Shanghai**

[www.phdchina.org](http://www.phdchina.org)